

NEUROFEEDBACK QUICKSTART GUIDE

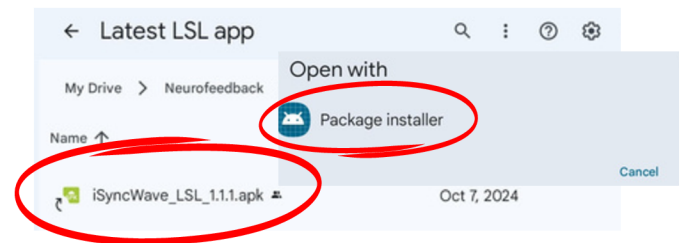


Welcome to the iMediSync Neurofeedback Set-Up Guide. This quick-start manual is designed to help you navigate the installation and usage of your Neurofeedback system. The information in this guide is also available on our YouTube channel: [\[link\]](#).

With the Brain Assistant app and your iMediSync device, you'll be ready to provide personalized neurofeedback sessions effectively and efficiently.

DOWNLOAD AND INSTALL REQUIRED APPLICATIONS

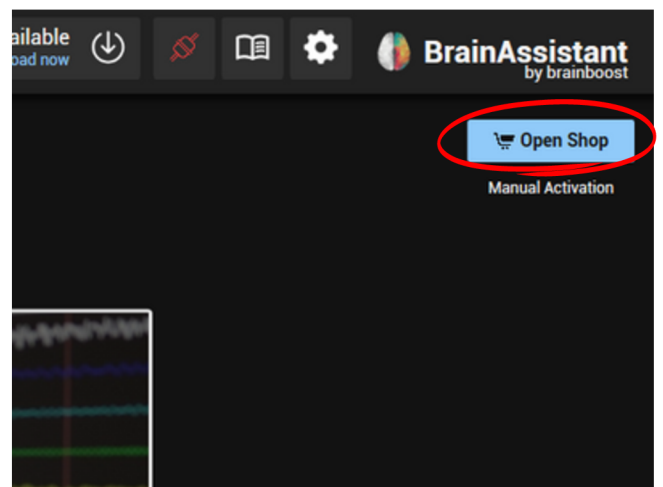
1. **Download LSL APK:** Open the welcome email on your tablet and locate the link to download the file named LSL APK. Download this file directly to your tablet using the "Package Installer" when prompted. The download link can also be accessed here: [\[LINK\]](#).



2. **Download Brain Assistant App:** Visit [Brain Assistant](#) on your computer and download the BrainAssistant Installer. Once downloaded run the .msi file to fully install the application.



3. **Create an Account:** Open Brain Assistant and follow the prompt to create a new trainer profile.



4. **Activate Brain Assistant:** On Brain Assistant's homepage, tap "Manual Activation" at the top right. Enter your activation key to enable features.

NEUROFEEDBACK QUICKSTART GUIDE



CONNECT DEVICE TO BRAIN ASSISTANT

1. **WiFi Setup:** Ensure the tablet and your computer are on the same WiFi network.

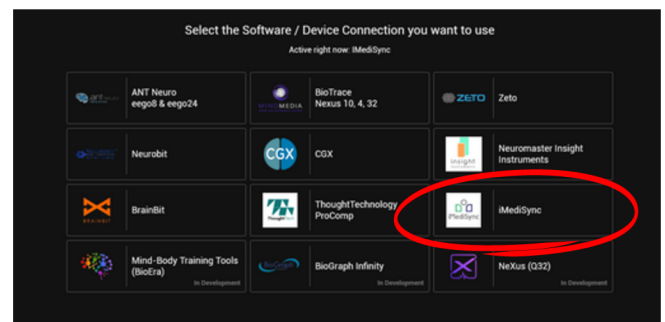
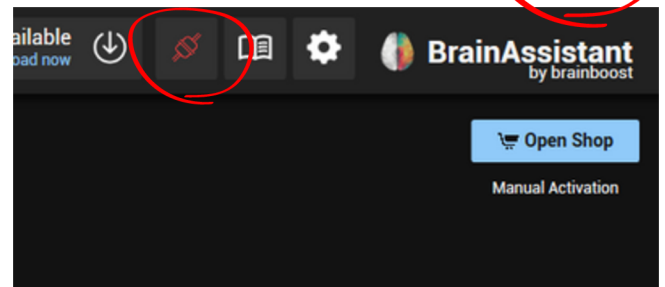
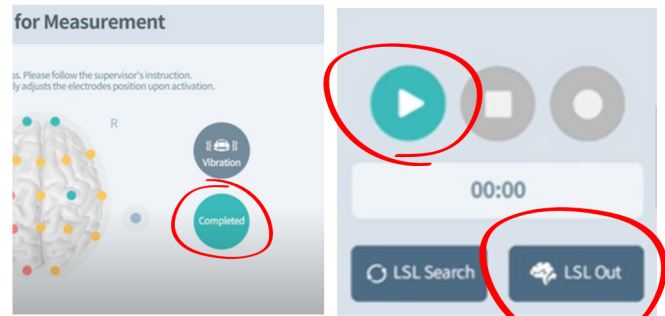
2. **Open LSL App:** Launch the LSL app on the tablet.

3. **Bluetooth Connection:** Connect the device to the tablet via Bluetooth.

4. **Impedance Check:** Complete an impedance check to ensure proper signal quality, then press the “Completed” and then the “Play” buttons.

5. **Enable LSL Stream:** Tap the “LSL Out” button (top right) in the LSL app.

6. **Connect to Brain Assistant:** In the Brain Assistant app, tap the connection icon at the top, select iMediSync as your device. The icon should turn green, indicating a successful connection.



NEUROFEEDBACK QUICKSTART GUIDE



RUNNING A NEUROFEEDBACK SESSION

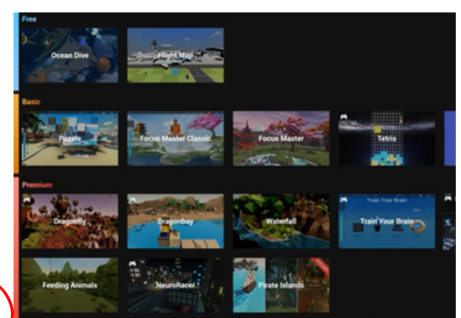
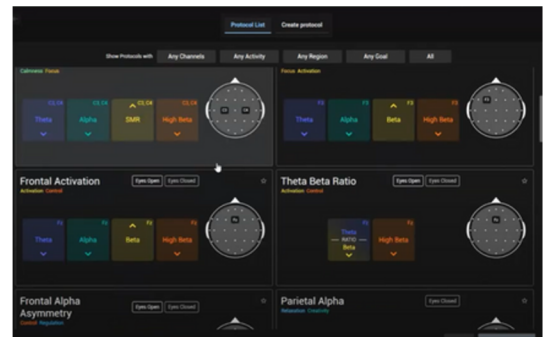
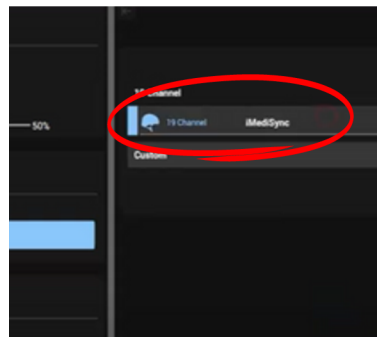
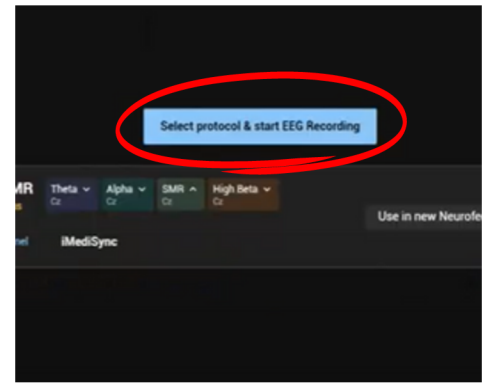
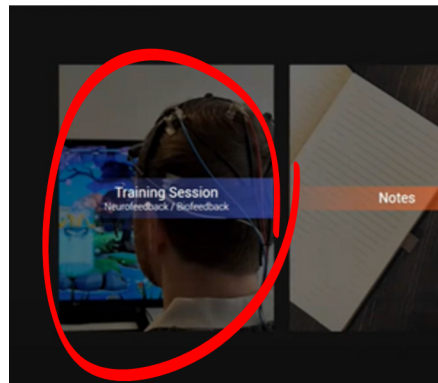
1. **Start a New Session:** Press "Training Session." on the Brain Assistant App

2. **Device Selection:** Press "Select Protocol" and then choose the iMediSync device

3. **Select Protocol:** Choose the protocol you wish to use.

4. **Signal Check:** The data will start streaming on-screen for the selected channels. Press start at the bottom when you are happy with the signal quality

5. **Start Application:** Tap "Start Application" and select your desired game or media player to begin the session.



Thank you again for Joining the Wave with iMediSync and BrainBoost.

For questions or troubleshooting assistance, please email us at us-marketing@imedisync.com.

To learn about future updates or changes, join our iMediSync mailing list by clicking [[here](#)].